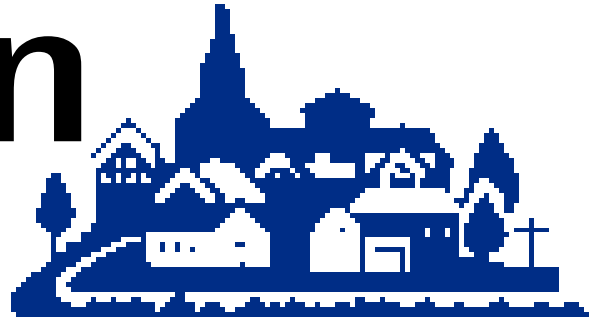


# Hoffman Homes



SUMMER 2003

*News from campus for Hoffman  
friends and neighbors*

## 6th Annual Golf Benefit a Success!



*2003 Golfer Robert Willis*

The 6th Annual Hoffman Homes for Youth Golf Benefit was an enjoyable success. More than \$12,000.00 was raised to fund the expansion of the therapeutic horsemanship program at Hoffman — meaning more horsemanship therapy hours for more of our children!

The staff at Hoffman would like to thank the individuals and businesses listed below who sponsored the Golf Benefit. We are particularly grateful to our Gold Sponsors, M&T Bank and Hopwood Insurance Agency and Silver Sponsor, Essis & Sons. Because of the generosity of our sponsors, we are able to host such a popular and beneficial event. Thank you!

Mark your calendars now for the 7th Annual Benefit at Hanover Country Club on June 14<sup>th</sup>, 2004. For advance sponsorship information, please call the Development Office (717) 359-7148 (ext. 1300).



*2003 Golfer Jerry Serfass*

### **GOLD SPONSORS:**

M&T Bank  
Hopwood Insurance  
Agency

### **CORPORATE SPONSORS:**

Barton Associates  
The Phillips Group  
Essis & Sons  
Noelker & Hull  
Associates, Inc.  
Utz Quality Foods, Inc.  
King & King  
P&M Crab House  
Pennsylvania Blue Shield  
Adams County  
National Bank  
Consolidated  
School of Business  
Smith, Elliott Kearns &  
Company, LLC

William M. Therit  
Nationwide Insurance  
WellSpan Quest  
Behavioral Health

Wm. F. Hill &  
Associates, Inc.  
Butler Woodcrafters  
Forsythe Marketing  
National Telephone  
Exchange, Inc.  
Deloitte Consulting  
Brewery Products of York  
Serfass Insurance Agency  
Mellon Private  
Asset Management  
Agway Energy Products  
PNC Bank  
AgCom, Inc.  
Rockwood Casualty  
Insurance Comany  
C.W. Test Builder

Dave Mumma,  
State Farm Agent  
Morefield  
Communications, Inc.  
Digital Sunrise  
Williams Service Co.  
Budget Self Storage  
Hanover Shoe Farms  
The Evening Sun  
Trout, Ebersole &  
Groff, LLP  
Gettysburg  
Construction Co.  
Hull Electric Service, Inc.  
Stambaugh Ness Business  
Solutions  
Keystruct Construction  
McClarín Plastics, Inc.  
Columbia Products, Inc.

*Continued Page 5*



**Hoffman Homes for Youth**  
815 Orphanage Road  
Littlestown, PA 17340  
(717) 359-7148

**EXECUTIVE DIRECTOR**

George Sepic, MEd, MSW, LSW

**DIRECTOR OF RESIDENTIAL &  
CLINICAL SERVICES**

Melissa Leatherly, MSW

**DIRECTOR OF ADMISSIONS**

David Bell, MSW, LSW

**DIRECTOR OF FINANCE**

C. Mitchell Snider, MBA

**DIRECTOR OF EDUCATIONAL  
SERVICES**

John Zinn, MEd, MEd

**DIRECTOR OF HUMAN RESOURCES**

Lori Garman, BS

**DIRECTOR OF INFORMATION  
MANAGEMENT**

Brenda Wiley, BA

**DIRECTOR OF HEALTH CARE  
SERVICES**

Cindy Swartz, RN

**DIRECTOR OF DEVELOPMENT**

Elizabeth Mazzei, MBA

---

Hoffman Homes is a private, not-for-profit Pennsylvania corporation. The purpose of Hoffman Homes for Youth is to provide comprehensive psychiatric care, treatment and education to emotionally and behaviorally troubled children and their families. Hoffman Homes is committed to providing services that are cost effective and responsive to the unique needs of each child. Hoffman Homes operates in close cooperation with parent/guardians, referring agencies, case management organizations, school systems and funding sources.

## Dear Friends,

The combined efforts of the workforce at Hoffman Homes are key to the success of our treatment programs for children.

While speaking on behalf of our current Capital Funds Campaign, I have the opportunity to share the history of Hoffman Homes with various business,

community and church related audiences. I often point out the fact that Hoffman Homes began as an orphanage in 1910 and served children in this environment through 1960. From 1960 through the early 90's, Hoffman Homes worked with children sometimes labeled as juvenile delinquents and often referred by the judicial system.

Today at Hoffman Homes, we are serving children who have been diagnosed with a severe mental illness and, based on the recommendation of a psychiatrist, are in need of placement in a residential treatment program.

Though not present during the early history of Hoffman Homes, I must believe that there were skilled and dedicated staff in place serving many different types of children with their particular special needs.

In my 22 years at Hoffman Homes, I can attest to the fact that during this time period, Hoffman Homes has been fortunate to have a qualified and dedicated staff doing their very best to help children enjoy a better life. I can say with a great deal of pride and appreciation that we currently have the very best staff — people dedicated to work as part of a treatment team to serve very seriously ill children. Hoffman Homes enjoys a very positive reputation in our respective field, and this is due in large part to the dedication and professionalism of our staff.

I am motivated in my work at Hoffman Homes by a passage entitled "PRIORITIES" which reads, "A hundred years from now, it will not matter what my bank account was, the sort of house I lived in, or the kind of car I drove ... but the world may be different because I was important in the life of a child."

I believe that the Hoffman Homes staff exemplifies this passage, and I am proud to be associated with them.

Sincerely,

*George Sepic M.Ed., MSW, LSW*

*Executive Director*



# Creative Therapy at Hoffman

Hoffman Homes Horticultural Therapy program has been active for well over a year. It has assumed many different forms from a gardening club, to nature hikes, to greenhouse and garden care. The most successful element is also the most recent — the vegetable garden. The secret to the vegetable garden's success as a therapeutic tool is three-fold. It encourages plant-human interactions; it teaches useful life skills that the children can take with them; and it is utilized by every residence on campus.

The vegetable garden has allowed children from all residences and all ages to connect with a living

thing. The children were solely responsible for the preparation of the soil, the gathering and selecting of the seeds, and nurturing the plants as they grew. Time and again individual residents continue to visit "their" garden, to see how the plants are doing. The children have learned to take responsibility for something and have come away with a sense of accomplishment.

Through outdoor education, hard work and a whole lot of care, the children have been able to create a garden that is used and enjoyed by everyone at Hoffman Homes. The children will soon harvest the vegetables, collect and store the

seeds for next spring, and learn how to turn their hard earned harvest into delicious food. The most incredible aspect of the horticultural therapy program is not what we are doing now, but what we will be able to do in the future.



*Ryan Sachse, Hoffman Homes Therapeutic Recreation Specialist*



*Residents of Trinity enjoy horticulture therapy in the vegetable garden.*



*Everyone on campus can enjoy the results of the horticulture program!*

## FOR MORE INFORMATION

Ryan Sachse  
Recreation Specialist  
email: [rsachse@hoffmanhomes.com](mailto:rsachse@hoffmanhomes.com)  
phone: (717) 359-7148 (ext. 1515)



# Rainbow of Hope Capital Campaign

As summer ends, our capital campaign continues. Campaign chairs Rev. Clayton Moyer and Mrs. Estelle King are busy coordinating events and recruiting supporters for this important capital campaign. We are now halfway through the first year of the campaign and our progress is starting to show! From the gardens to the horse barn, it is easy to see the results of your generosity.

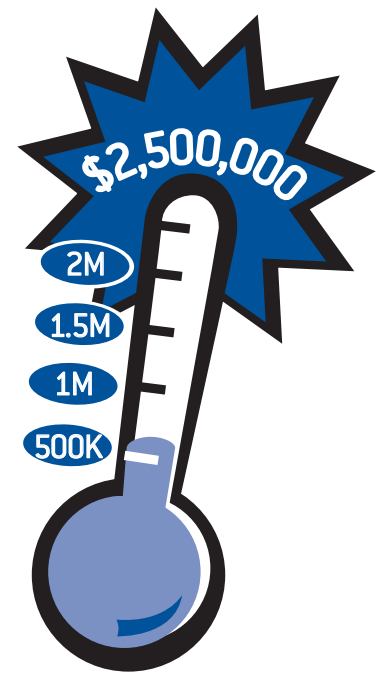


*Granville R. Schultz, Jr. (L) and Ron Annett (R) of the Gettysburg VFW Chapter present David Bell, Hoffman Director of Admissions, with a generous donation for the Rainbow of Hope Capital Campaign.*

If you haven't already, please consider a gift for this one-time campaign. In order to keep pace with the challenges of healing abused, neglected and severely disturbed children, Hoffman Homes must expand current

treatment methods. The shocking level of abuse and neglect experienced by many of our children has left them with multiple developmental, emotional and social disorders leaving them unable to function successfully in the community. Traditional "talk" therapy, while vital, is not sufficient to reach emotionally withdrawn and vulnerable children that are being admitted to our program.

Innovative creative therapies offer alternative methods of building healthy emotional connections. Our mission is to foster self-esteem, compassion



and a sense of responsibility for others in each child we serve. Our goal is for the children to return to their communities healthy and whole, and better able to live, work and play.

The current operating budget cannot accommodate the rising expenses associated with the creative therapy program. The "rainbow of hope" campaign will enable us to do so.

<b>Campaign Goal</b>	<b>\$ 2,500,000.00</b>
<b>Funds Pledged</b>	<b>\$ 471,124.03 (as of August 1 st, 2003)</b>

## Naming Opportunities

### THERAPEUTIC HORSEMANSHIP

Therapeutic Riding Center	\$100,000
<i>NAMED Thank you, Hanover Shoe Farms!</i>	
Equestrian Classroom	\$10,000
<i>NAMED Thank you, George Sepic!</i>	
Run-in Shed (5)	\$5,000 each
Equestrian Office	\$5,000
<i>NAMED Thank you, Betty Thompson!</i>	
Indoor Riding Arena	\$100,000
Outdoor Riding Arena (2)	\$25,000 each
Horse Stalls	\$10,000
Paddock (5)	\$5,000 each
Tack Room	\$5,000
<i>NAMED Thank you, Clay &amp; Polly Moyer!</i>	

### CHAPEL RENOVATIONS

Handicapped Entrance	\$10,000
Bathroom	\$10,000
Sound/Lighting	\$15,000
Stage Renovation	\$10,000
Entrance Doors	\$5,000
<i>NAMED Thank you, Hoffman Friends!</i>	

### HORTICULTURE THERAPY

Pavilion	\$25,000
Water Garden	\$5,000
<i>NAMED Thank you, Brenda &amp; Rebecca Wiley!</i>	
Landscaping Gardens (2)	\$10,000 each
Observation Deck	\$5,000
Horticulture/Pet Therapy Fence	\$5,000
Greenhouse	\$10,000

## PLEDGE FORM

# Rainbow of Hope Capital Campaign

*Please help us meet our goal!*

Your contribution is applied directly to the creative therapies at Hoffman Homes for Youth. Your support enables us expand and improve our creative therapies program — a program proven to be successful with our children.

**Yes**, I would like to contribute to the Rainbow of Hope Capital Campaign!

Name \_\_\_\_\_

Address \_\_\_\_\_

City \_\_\_\_\_

State \_\_\_\_\_

Zip \_\_\_\_\_

Email \_\_\_\_\_

Telephone \_\_\_\_\_

This donation is made:

In Honor of \_\_\_\_\_

In Memory of \_\_\_\_\_

Please notify the following persons of my gift (name & address): \_\_\_\_\_  
\_\_\_\_\_  
\_\_\_\_\_

Please accept my tax-deductible gift (please write amount)  
\$ \_\_\_\_\_

*(Please make checks payable to Hoffman Homes for Youth)*

Please do not list me as a donor.

Official registration and financial information for Hoffman Homes for Youth may be obtained from the Pennsylvania Department of State by calling toll-free within Pennsylvania 1 (800) 732-0999.



## 6th Annual Golf Benefit Sponsors...

*Continued from Page 1*

Universal Satellite and  
Antenna  
Garretson Tile Company  
Valley Quarries, Inc.

### GOLFERS & INDIVIDUAL SPONSORS:

Adam Beach  
Larry Bream  
Cordial Coworker's Class,  
St. John UCC,  
Red Lion, PA  
Dru Dubs  
Joe McCullough  
Eternal Youth Class, St. John  
UCC, Red Lion, PA  
Paul & Pamela Girvin  
Thomas & Nancy King  
Robert & Mary McFarland  
Gloria & Millard Miller  
George Sepic  
Dale & Debra Sprenkle  
Reg Wagner  
Upper Room Class #6, St.  
John's UCC, Red Lion, PA  
A Friend from St. John's  
UCC, Red Lion, PA  
Bulle Rock Golf Course  
Caledonia Golf Course  
Kelly's Roofing and  
Insulation  
The Blue Parrot Bistro  
Wal-Mart  
Wilderness Leather Lodge  
Gettysburg Quality Inn  
Motor Lodge  
South Mountain  
Golf Course  
Charles Karper Trucking  
John Berger  
James Dow  
Mary Crockett  
Tom Matthews  
Eugene & Nancy Taylor  
Linda & Theodore  
Gallagher  
Rick & Estelle King  
Ralph Lemmon  
Bill Monahan  
Mike Porter  
Allen Shipley  
George Stouffer  
Bill Witman

Gerald Serfass  
Mr. Ed's  
Robert & Elena Werner  
Waynesboro Country Club  
Pound's Auto Service  
Larry Knutson  
Majestic Ridge Golf Course  
The Geat Plant Company  
Rita's Italian Water Ice  
Market America, Eco-Solve  
Lynette King Ceramics  
Penn National Golf Course  
The Bon Ton  
Dave Borden  
Mike Ford  
Jim Cullison  
Bud Wilkins  
Adrian Melnyk  
Lee Powell  
Thomas & Gwen King  
Michael Loser  
Mitch Snider  
Bob Willis  
Dick Reese  
Robert Thompson  
John Zinn  
Kim Blocher  
Boyer's Nursery  
Carl Frantz Plumbing  
Pat's Pub & Grill  
Gallery 30  
Lowe's  
The Dog House  
The Atland House  
Mary Louise Misner  
WGTY

**BENEFIT COMMITTEE  
MEMBERS — THANK YOU!**  
Steve Harner, M&T Bank  
Rick Hopwood, Hopwood  
Insurance Agency  
Duff Forsythe,  
Forsythe Marketing  
Reg Wagner  
Gerald Serfass  
Bill Witman  
Ralph Lemmon  
Kim Blocher  
Bill Monahan  
George Sepic  
Fred Garman

# Focus on SCHOOL



*Director of Educational Services,  
John Zinn, MEd, MSED*

## ***In His Own Words... John Zinn***

“One of the most rewarding benefits of working at Hoffman Homes is being in a position to touch the life of a child who is seeking help. Many of the children entering our program have experienced a multitude of troubling and traumatic circumstances that diminish their self-worth. Building self-esteem becomes the focus within all parts of a child’s program as the first step in guiding the child in a positive direction and personal growth.

All students in care are recommended for 24 hour psychiatric treatment. Subsequently, they are educated on campus so that urgent clinical and medical needs can be immediately addressed. The Lincoln Intermediate Unit # 12 provides The Hoffman School with instructional staff for eleven Emotional Support classrooms and a Title I remedial skill development program. Educationally, our school team strives to appropriately meet the individual academic needs of each child.

**August is back to school time for Hoffman Homes children.** So it’s not a surprise that we have chosen The Hoffman School for our first in a series of “Focus” articles. To help us understand everything that is a part of school on the Hoffman Homes Campus, we focus in on John Zinn, Director of Educational Services.

## **The Interview**

**How long have you been at Hoffman Homes?**

I started at Hoffman in August 1982 as a teacher. I spent half days with day students and the other half teaching physical education.

**How did you learn about Hoffman Homes?**

I was teaching at York City Schools and looking to make a change. I was told about an opening at Hoffman Homes and didn’t know anything about it despite coming from nearby Hanover. After 3 years, I was promoted to assist George Sepic, who was then the Director of Education Services until becoming the Director myself in 1994.

**What is your favorite thing about your job?**

My job gives me energy. I want these kids to know that someone cares about them.

**What is your favorite spot on campus?**

No doubt, it’s the dining hall. It’s more relaxed and the kids aren’t inhibited. I’ll sit with them over lunch and they include me in their conversations and their lives. It’s a great opportunity for them to work on valuable social skills.

**What do you like to do when you aren’t at Hoffman?**

I like to ride my bike, preferably early mornings out Littlestown Pike and around Hanover Shoe Farms. It’s still a bit dark so I have multiple lights for warning. I look like an ambulance from a distance.

**What is your biggest accomplishment at Hoffman Homes?**

I’m most proud of our move to the year-round school program. This approach is more in-line with the therapy provided at Hoffman Homes and has enormous benefits to the children. I’m also excited about the added cultural diversity within the school program. Due to additional funding, we have monthly special programs such as career exploration seminars and the popular multi-media program “Quest for Respect.”

### **FOR MORE INFORMATION**

John Zinn, MEd, MSED  
Director of Educational Services  
email: [jjinn@hoffmanhomes.com](mailto:jjinn@hoffmanhomes.com)  
phone: (717) 359-7148 (ext. 1899)

# Development News

As the new Director of Development at Hoffman Homes, I'm happy to bring you good news regarding the progress of our Capital Campaign (see article p. 4). The results of the campaign, even in these early stages, are all around us on the Hoffman oval.

Even while we work on this special Capital Campaign an appeal for the Annual Fund will be mailed to you in November. The Annual Fund is an important source of necessary funds for the maintenance of our children's residences on campus. These residences are their homes while at Hoffman.

Last year the Annual Fund raised \$73,795.00 and residences were improved with new flooring and bathrooms. This year our goal will be to raise more than \$95,000.00 — our highest Annual Fund goal ever!

To reach this ambitious goal, we've enlisted the artistic talent of the young women living in the Zion residence. A reproduction of the winning design (every child submits one painting/drawing for the contest) will be sent to you for the Thanksgiving holiday.

Please enjoy their talent, and while giving thanks with friends and family, consider increasing your support to the Hoffman Homes 2003 Annual Fund. If you don't want to wait for November, please use the pledge form attached. Thank you!

Hoffman Homes

## Upcoming

# EVENTS

### 9/28 HOGG Event

The Gettysburg Chapter of the Harley's Owners Group will be visiting campus for a "best bike" contest, demonstration and picnic for children and riders alike!

### 10/18 Road Rally

The Land Conservancy of Adams County will make Hoffman Homes a stop on their Annual Road Rally. Cars will arrive on campus in the afternoon. Information regarding the Rainbow of Hope Capital Campaign and beverages will be supplied for weary drivers!

#### FOR MORE INFORMATION

Elizabeth Mazzei, MBA  
Director of Development  
bmazzei@hoffmanhomes.com  
(717) 359-7148 (ext. 1300)

### Please help Hoffman Homes continue it's mission for children today!

Your contribution is applied directly to Hoffman Homes care for children today. Your support enables us to continually expand and improve our facilities as we seek to return these children to their families and communities. Thank you for your support.

**Yes**, I would like to contribute to the 2003 Annual Fund!

Name \_\_\_\_\_

Address \_\_\_\_\_ City \_\_\_\_\_

State \_\_\_\_\_ Zip \_\_\_\_\_

Email \_\_\_\_\_ Telephone \_\_\_\_\_

This donation is made: In Honor of \_\_\_\_\_

In Memory of \_\_\_\_\_

Please notify the following persons of my gift (name & address): \_\_\_\_\_

\_\_\_\_\_

Please accept my tax-deductible gift (please write amount) \$ \_\_\_\_\_

*(Please make checks payable to Hoffman Homes for Youth)*

#### Tax-Advantage Stock or Equity Transfer

(Please contact me with information about how to transfer stock or other equity to the Hoffman Homes account. Equity transfers are one of the most tax-advantaged ways of donating to charity.

Hoffman Homes will provide information on how to execute this simple transfer.)

Please do not list me as a donor.

Official registration and financial information for Hoffman Homes for Youth may be obtained from the Pennsylvania Department of State by calling toll-free within Pennsylvania 1 (800) 732-0999.

NON-PROFIT  
POSTAGE  
PAID  
GETTYSBURG  
PERMIT NO. 200

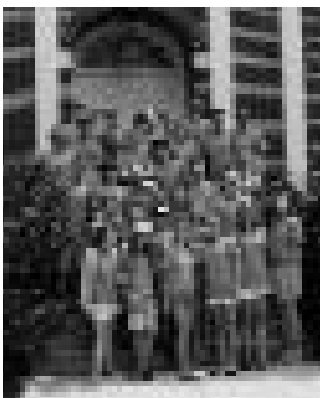
*Hoffman Homes for Youth*  
A Residential Psychiatric Treatment Center for Children  
815 Orphanage Road, Littlestown, PA 17340



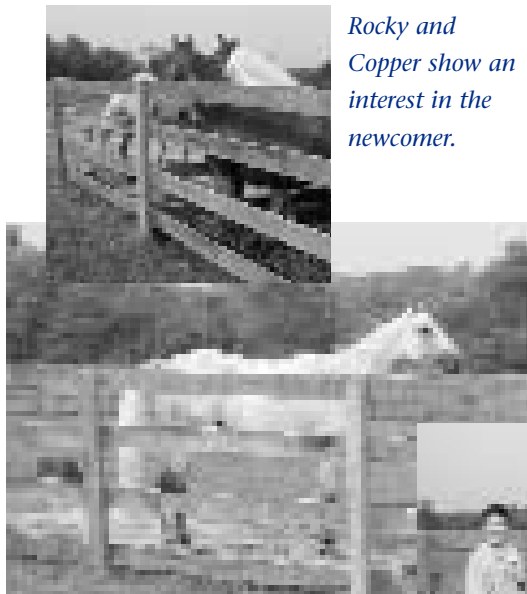
Return Service Requested

# What's Happening at Hoffman?

*See for yourself...*



*The Kirk Singers of First Presbyterian Church of Fort Lauderdale, Florida, share their music ministry with the Hoffman children. This talented youth choir made a special stop at Hoffman Homes as part of their summer singing tour.*



*Hoffman Homes is pleased to introduce the newest therapist at the barn. His name is Giovanni and he arrived August 12th.*

*Rocky and Copper show an interest in the newcomer.*



*Members of the New Hope UCC (Meyersdale) Confirmation Class visit Hoffman Homes on their way home from New York City.*



*Giovanni brings out smiles in everyone — including Derek!*



*80 Members of the Gettysburg-Adams County Chamber of Commerce attend a breakfast meeting at Hoffman Homes in the school cafeteria.*

Rainbow of Hope Campaign Progress.....page 4

Hoffman at Home — Focus on School .....page 6

Horticulture Therapy .....page 3

Accredited by the Joint Commission on Accreditation of Healthcare Organizations

**HOFFMAN BY THE NUMBERS**

Average length of stay (based on discharges in 2003) was 10 months

**INSIDE THIS ISSUE:**